

COMPANY UP&DOWN DOWNLIGHT IN-GROUND BRICKLIGHT FLOODLIGHT BOLLARD BULKHEAD GARDEN URBAN CLASSIC URBAN MODERN POST LAMPS REFERENCES

# SAURO LED

ROUND BOLLARD - CLASSIC



Bollard range in classic style made of shockproof resin material, UV-rays stabilized, rust and corrosion-free. Supplied with TÜV-CB certified, long-life, efficient and **Kelvin settable GX53 LED lamp included** available in different wattages. Uniform light distribution for a safer and more enjoyable night atmosphere. Insulation class II, protection rating IP55.

*Gamma di bollard in stile classico, realizzata in resina antiurto, stabilizzata ai raggi UV, inattaccabile da ruggine e corrosione. Fornita con **inclusa lampadina a LED GX53 con Kelvin impostabile** certificata TÜV-CB, di lunga durata ed elevata efficienza, disponibile in diverse potenze. Uniforme distribuzione della luce per un'atmosfera notturna sicura e gradevole. Classe di isolamento II, grado di protezione IP55.*

D15.555.D1KCRB



**CCT SETTABLE**

3000 K 4000 K 6500 K

SDCM <6

CE	UV UV TREATED	CLASS II DOUBLE INSULATION	PUBLIC	RESIDENTIAL
RECYCLABLE	ANTI-SHOCK	TEMPERATURE +90° -60°	WALL	POST



**SAURO LED COMPONENTS**

IP55



**CAP** made of shockproof resin material, locked to the diffuser and equipped with GX53 led lamp. To be removed for relamping by the supplied hexagonal key for locking screws.

**CALOTTA** fissata al diffusore, realizzata in resina antiurto e completa di lampadina led GX53. Rimovibile tramite vite di sicurezza per permettere il cambio della lampadina.

**DISK** made of UV-rays stabilized PMMA to spread the light and to get a lower dazzle.

**DISCO** in polimetilmetacrilato (PMMA) per diffondere la luce e ridurre l'abbagliamento.

**DIFFUSER** of UV stabilized polymethylmethacrylate (PMMA) available in clear or opal colour.

**DIFFUSORE** in polimetilmetacrilato (PMMA) resistente all'ingiallimento ed ai raggi UV, disponibile in colore trasparente o opale.

White **REFLECTOR** with conical shape made of shockproof resin material.

**RIFLETTORE** bianco a forma conica, realizzato in resina antiurto.

**CONNECTION RING** made of shockproof resin material, UV-rays stabilized, rust and corrosion-free.

**GHIERA** di raccordo realizzata in resina antiurto, stabilizzata ai raggi UV, inattaccabile da ruggine e corrosione.

**SAURO LED**

— Ø150 —



**Dimensions**

Diameter: Ø150 mm  
Height: 500/800/1100 mm

**Moulded colours:**

Black White  
Grey

**Painted colours:**

Antique green Antique bronze

**Diffuser PMMA:**

Clear Opal

**LED LAMPS**



Technical details on page 552.

**GX53 LED**

100 - 240 V

\*ADD. SUFFIX

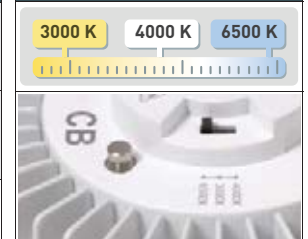


7 W	800 Lm	6500 K	.C1K
		4000 K	
10 W	1200 Lm	3000 K	.D1K
		6500 K	
		4000 K	
		3000 K	

- **COST SAVING:** long-life and efficient LED light sources
- **BUILT-IN DRIVER:** quick and easy lamp replacement
- **GREAT FLEXIBILITY:** GX53 standard lamp holder
- **FUTURE-PROOFED LUMINARIES:** performances easy to upgrade to latest technology developments
- **SUITABLE FOR OUTDOOR USE:** driver fully protected against heat and humidity by silicone paste.

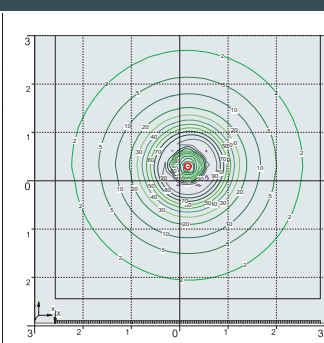
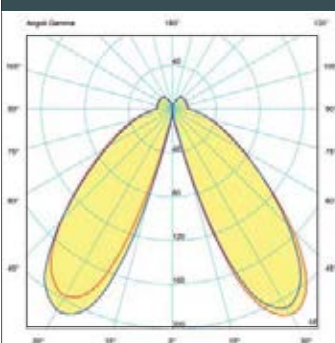
Bollard supplied as standard with TÜV-CB certified, long-life, efficient and Kelvin settable GX53 LED lamp included. Different wattages available. Quick and easy lamp replacement for a very simple maintenance after installation.

**CCT SETTABLE LED LAMP**



CCT switch settable in three different positions, to select the desired Kelvin temperature (3000K/4000K/6500K) and get a customized ambience.

**PHOTOMETRIC DATA SAMPLE**



**SAURO 1100** clear GX53 10W.

Sauro height 1,1 mt  
Area: 6x6 mt - average 11 lux

The photometric data for all the versions are available upon request or on our website.

7W 800 Lm = 75W incandescent  
**SAVE 90%**

10W 1200 Lm = 100W incandescent  
**SAVE 90%**

**SAURO LED**

ROUND BOLLARD - CLASSIC



D15.554.D1KCRB



D15.553.D1KCRB



D15.505.D1KCRB





SAURO 1100 LED	
<b>7W</b>	D15.555.C1KCRB
<b>10W</b>	D15.555.D1KCRB

CCT SETTABLE GX53 LED LAMP INCLUDED  
3000K/4000K/6500K

Pcs 1  
Kg 4,2  
mc 0,068

SAURO 800 LED	
<b>7W</b>	D15.554.C1KCRB
<b>10W</b>	D15.554.D1KCRB

CCT SETTABLE GX53 LED LAMP INCLUDED  
3000K/4000K/6500K

Pcs 1  
Kg 3,4  
mc 0,05

MIRELLA LED	
<b>7W</b>	D15.505.C1KCRB
<b>10W</b>	D15.505.D1KCRB

CCT SETTABLE GX53 LED LAMP INCLUDED  
3000K/4000K/6500K

Pcs 1  
Kg 2,7  
mc 0,032

SAURO 500 LED	
<b>7W</b>	D15.553.C1KCRB
<b>10W</b>	D15.553.D1KCRB

CCT SETTABLE GX53 LED LAMP INCLUDED  
3000K/4000K/6500K

Pcs 1  
Kg 2  
mc 0,032

COMPANY UP&DOWN DOWNLIGHT IN-GROUND BRICKLIGHT FLOODLIGHT BOLLARD BULKHEAD GARDEN URBAN CLASSIC URBAN MODERN POST LAMPS REFERENCES

**SAURO E27**

ROUND BOLLARD - CLASSIC



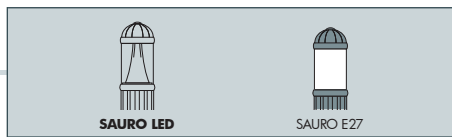
Bollard range in classic style made of shockproof resin material, UV-rays stabilized, rust and corrosion-free. Provided with E27 lampholder and prepared for louvre fixation. Insulation class II, protection rating IP55.

*Gamma di bollard in stile classico, realizzata in resina antiurto, stabilizzata ai raggi UV, inattaccabile da ruggine e corrosione. Fornito con portalampana E27 e predisposto per il fissaggio del frangilucente. Classe di isolamento II, grado di protezione IP55.*

D15.554.FC1





**SAURO E27 COMPONENTS**



**CAP** locked to the diffuser and made of shockproof resin material. To be removed for relamping by the supplied hexagonal key for locking screws.

**CALOTTA** fissata al diffusore e realizzata in resina antiurto. Rimovibile tramite vite di sicurezza per permettere il cambio della lampadina.

**DIFFUSER** made of UV-rays stabilized polymethylmethacrylate (PMMA), available in clear or opal colour.

**DIFFUSORE** in polimetilmetacrilato (PMMA) resistente all'ingiallimento ed ai raggi UV, disponibile in colore trasparente o opale.

**LOUVRE (Optional)** with a laminar symmetrical optic system, to direct the lighting output and to get a lower dazzle. Available in white resin material or in chrome aluminium. Recommended use with clear diffuser bollard.

**FRANGILUCE (Optional)** con sistema ottico lamellare a ripartizione simmetrica, per orientare il fascio di luce e ridurre l'abbagliamento, disponibile nella versione in resina bianca o in alluminio cromato (utilizzo raccomandato con diffusore trasparente).

CLOSED RING  
White Resin  
(H.FRA.D15)



CLOSED RING  
Aluminium Chrome  
(H.FC1)



**CONNECTION RING** provided with E27 lampholder seat in its upper side.

**GHIERA** di raccordo nella cui parte superiore si trova l'alloggiamento del portalamada E27.

**SAURO E27**



**Dimensions**

Diameter: Ø150 mm  
Height: 500/800/1100 mm

**Moulded colours:**

- Black
- White
- Grey (except Nardo)

**Painted colours:**

- Antique green
- Antique bronze

**Diffuser PMMA:**

- Clear
- Opal

**E27 VERSIONS**

100 - 240 V

\*ADD. SUFFIXV

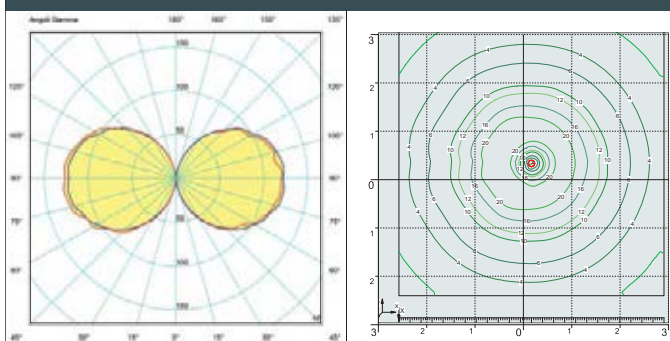
lampholder only <b>E27</b>	max 70W max 190mm		.E27	
	 FILAMENT LED E27	6 W	800 Lm	4000 K
2700 K				.F1R
8 W		1000 Lm	4000 K	.M1L
			2700 K	.M1R
12 W		1500 Lm	4000 K	.N1L
			2700 K	.N1R

**LED LAMPS**



Technical details on page 552.

**PHOTOMETRIC DATA SAMPLE**



**SAURO1100** opal 12W Filament LED.

Sauro height 1,1mt  
Area: 6x6 mt - average 8 lux

The photometric data for all the versions are available upon request or on our website.

\* ADD THESE SUFFIXES TO THE REFERENCES MENTIONED IN THE CATALOGUE

COMPANY  
UP&DOWN  
DOWNLIGHT  
IN-GROUND  
BRICKLIGHT  
FLOODLIGHT  
BOLLARD  
BULKHEAD  
GARDEN  
URBAN CLASSIC  
URBAN MODERN  
POST  
LAMPS  
REFERENCES

**SAURO E27**

ROUND BOLLARD - CLASSIC



D15.555.FC1

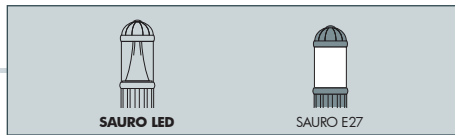


D15.505.FRA



D15.554.FC1





**SAURO 1100**  
D15.555

Pcs 1  
Kg 4  
mc 0,068

**SAURO 800**  
D15.554

Pcs 1  
Kg 3,2  
mc 0,05

**MIRELLA**  
D15.505

Pcs 1  
Kg 2,5  
mc 0,037

**SAURO 500**  
D15.553

Pcs 1  
Kg 1,8  
mc 0,032

**NARDO 900**  
000.515

Pcs 1  
Kg 1,6  
mc 0,054

**NARDO 600**  
000.514

Pcs 1  
Kg 1,2  
mc 0,040

**BOLLARD CHAIN (OPTIONAL)**  
H.BOL.CHN

*Optional resin chain for Bollard - Size 1000 mm. Supplied with 2 open rings with closing system at the end.*

*Catena opzionale per bollard in resina - Misura 1000 mm fornita con due anelli aperti con sistema di chiusura alle estremità.*